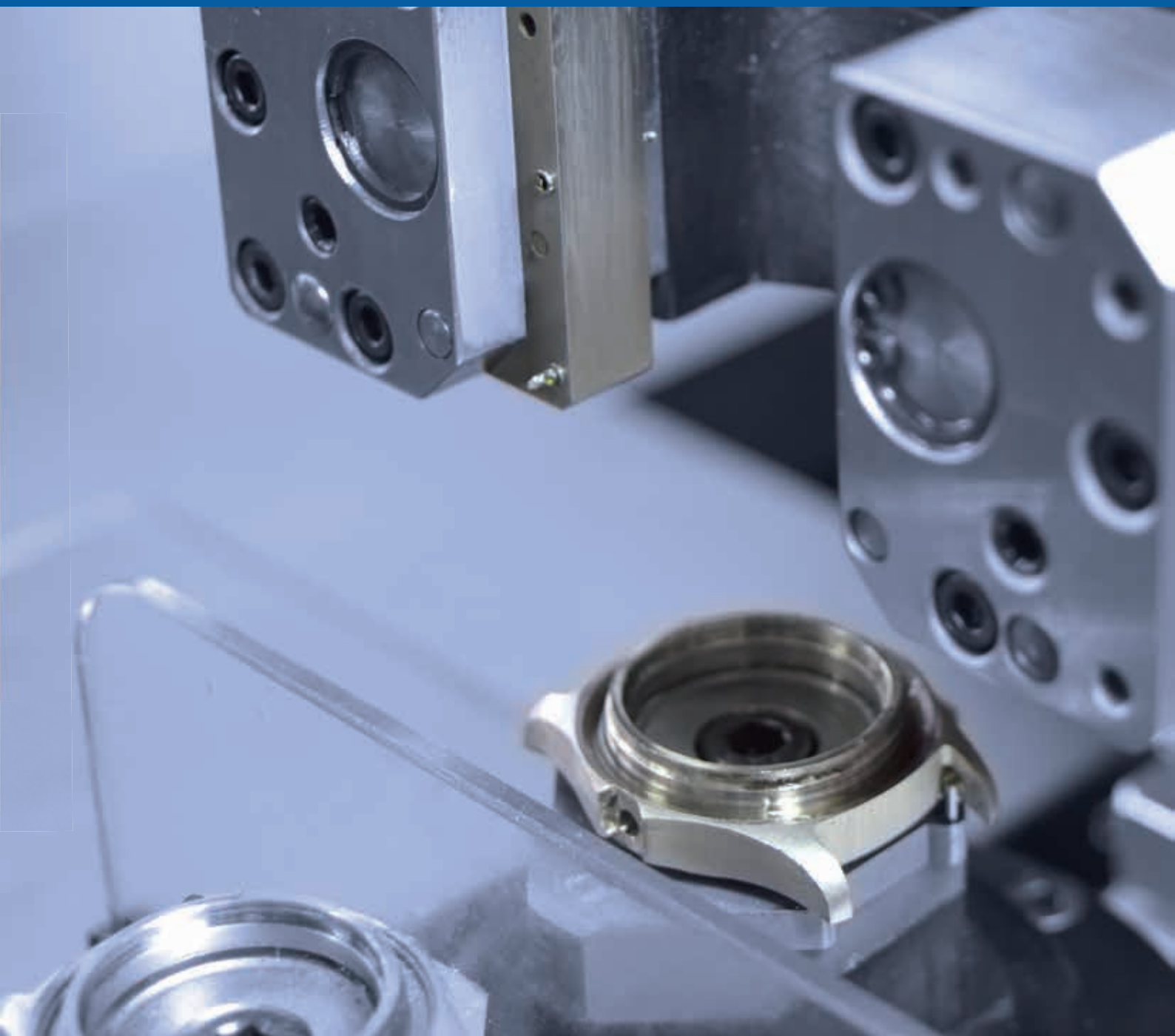


◀ WATCHMAKING ▶

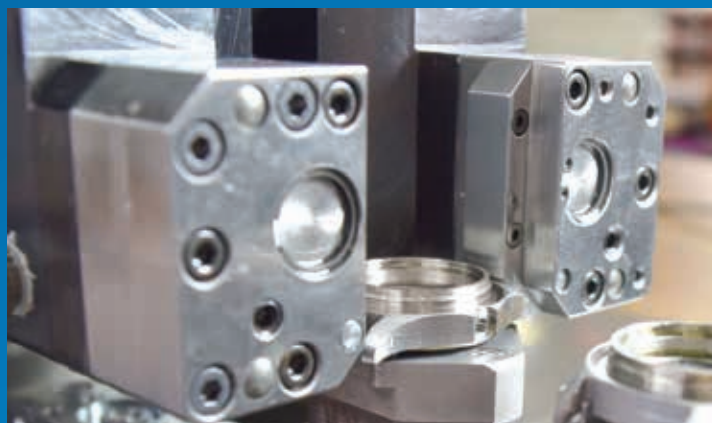
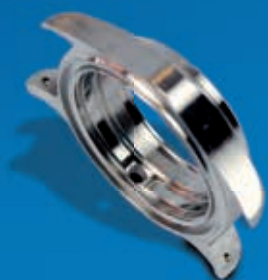


MAGIC

Bench-type machine to drill **spring bar holes**



MAGIC is a bench-type machine with 3 axis dedicated to watchmaking for drilling spring bar holes. **This machining concept is unique in the world.** The MAGIC process is to drill simultaneously two spring bar holes perpendicular between lugs.

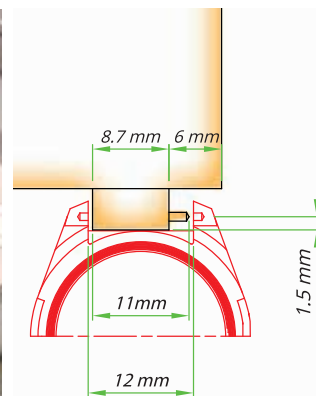


MODULE WITH REVOLUTIONARY CONCEPT

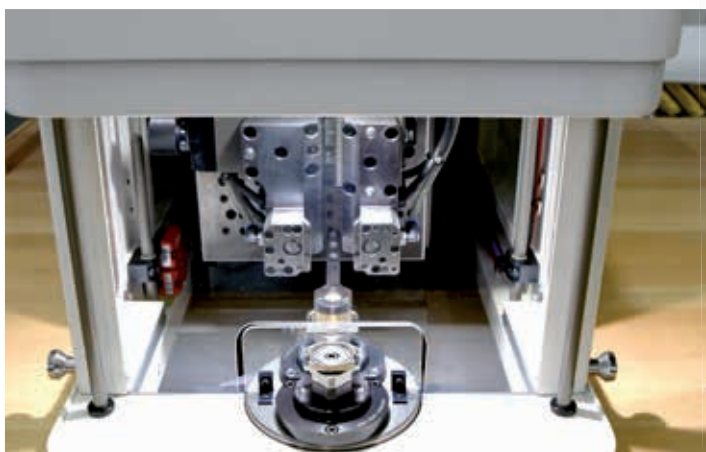
The **PIBOMULTI** drilling head **used by MAGIC** is highly miniaturized, in order to allow to drill the spring bar holes inside lugs of watch cases.

This main features are :

- Perpendicular drilling
- Small tools
- Life enhanced tools
- Possibility of a chamfering (combined tools)
- Reduction of cycle time
- Adaptation to all type of machines to avoid relapse.



MASKED TIME LOADING



A rotary table allows loading in masked time. A double-walled door prevents the user to access the machining area during the cycle and thus allows a safety loading.



EMISSA SA

Jambe Ducommun, 18 • 2400 Le Locle • Switzerland

Tel: +41 32 933 06 66 • Fax: +41 32 933 06 60 • info@emissa.com

www.emissa.com

E.150522bEN Non contractual datas



SWISS  MADE